

I'm not a bot

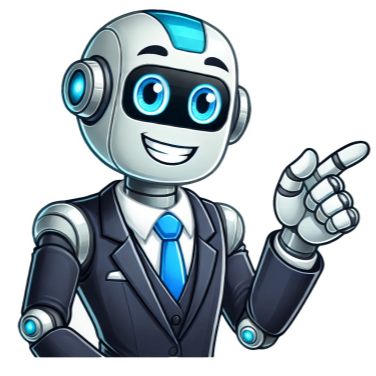
























TABLE SAW QUIZ/ AGRICULTURAL POWER, STRUCTURE AND TECHNOLOGYTo tighten all clamps, guards and locking handles before use would be (a) Share copy and redistribute the material in any medium or format for any purpose, even commercially. Adapt remix, transform, and build upon the material for any purpose, even commercially. The licensor cannot revoke these freedoms as long as you follow the license terms. Attribution You must give appropriate credit, provide a link to the license, and indicate if changes were made. You may do so in any reasonable manner, but not in any way that suggests the licensor endorses you or your use. ShareAlike If you remix, transform, or build upon the material, you must distribute your contributions under the same license as the original. No additional restrictions You may not apply legal terms or technological measures that legally restrict others from doing anything the license permits. You do not have to comply with the license for elements of the material in the public domain or where your use is permitted by an applicable exception or limitation. No warranties are given. The license may not give you all of the permissions necessary for your intended use. For example, other rights such as publicity, privacy, or moral rights may limit how you use the material. Back to top A radial arm saw can be dangerous if not used properly. Read the owner's manual carefully. Make sure you understand instructions before attempting to use any tool or machine. Learn the applications and limitations before use. Refer to Woodworking Machines - General Safety Tips for general safety precautions. Back to top Wear safety glasses with side shields or safety goggles, or a face shield (with safety glasses or goggles). Wear hearing protection that is suitable for the level and frequency of the noise you are exposed to in the woodworking area. Wear protective footwear, when required. Wear respiratory protection, when required. Feed the stock against the direction of the blade (the blade should move downward when viewed by the operator). Operate the blade at speeds recommended by the manufacturer. Use only the accessories designed for that specific saw and application. Make sure fences and any other guards are properly adjusted and in place before using the machine. Ensure the guard consists of two parts: Upper hood type that covers the arbour. Lower guard that rides on the stock, adjusting automatically to the thickness being cut. Stand on the handle side when cross-cutting. Pull the cutting head with the hand nearest the handle and maneuver the stock with the other hand. Make sure the hand holding the stock is never in line with the blade. Return the cutting head completely to the back of the saw table after each cut. The saw should be designed so that the blade will not move forward under its own weight or if the machine is vibrating. When ripping, make sure that the overall length of the saw table (both infeed and outfeed) is twice the length of the longest pieces of lumber. When ripping, make sure that the stock is fed against the direction of the blade (from the side where the saw blade rotates upward toward the operator). The blade should extend slightly into the table. The motor head must be locked at the correct height and angle. Make sure that the cutting table is wide enough so that no part of the saw blade overhangs the front edge of the table. Clamp the stock to the table on one side of the saw blade when making mitre, bevel or compound mitre cuts. Clamping prevents the wood from sliding along the fence during the cut. Turn off the saw and unplug the electricity when making any adjustments or changes to the set up. When taking measurements, turn off the saw and place the wood to be cut against the stop gauge. Back to top Do not cut the stock that has loose knots, splits, defects or foreign objects (e.g., metal or stone) in it. Do not use radial arm saws for ripping unless the spreader (riving knife) and anti-kickback devices are provided and properly adjusted. Do not take your hand away from the operating handle unless the cutting head is behind the fence. Do not remove the stock from a saw table until the blade has been returned to its "resting" position at the back of the saw table. Use a stick or brush to remove scrap from the saw table. Do not cut "free hand". Use the back guide, fence, or other device to keep the workpiece from moving. Do not use cracked or dull blades. Do not leave a running saw unattended leave only after the saw has been turned off and it has come to a complete stop. Do not wear loose clothing (including strings or ties), work gloves, neckties, rings, bracelets or other jewellery that can become entangled with moving parts. Fact sheet confirmed current: 2025-03-10 Fact sheet last revised: 2019-08-09

**Radial arm saw safety and operation test answers. Radial arm saw safety test quizlet. Radial.arm.saw. Radial arm saw safety test answers.**