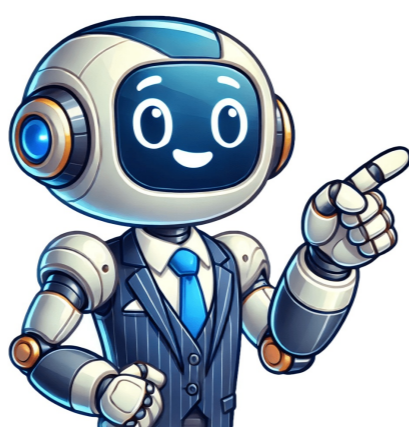


I'm not robot





Toyota has been producing and marketing vehicles since 1935. Today, many of its models are designed and manufactured in-house, while others are produced and supplied to Toyota through OEM agreements. The company's model lineup varies greatly depending on the region. Some models are limited to specific markets, while others are marketed worldwide. This list excludes Lexus, Scion, Daihatsu, and Hino-branded vehicles. Suzuki's VitZ, rebadged as Glanza for India and Africa, has been developed for emerging markets since 1998. The Yaris (XP150) was introduced in Asia, Africa, and Latin America in 2013, while the Yaris (XP210) for Japan, Europe, and Australasia came out in 2020. The GR Yaris is a high-performance version of the Yaris (XP210), produced globally except North America. Corolla's station wagon versions were released in 1966 for Japan and in 2012 for Europe and Japan. Toyota has also expanded its lineup with crossover SUVs like Aygo X, bZ3C, bZ3X, and bZ4X, all featuring battery-electric powertrains. The Corolla Cross is a compact crossover based on the Corolla platform, available globally except North America. Toyota also produces the Century SUV for Japan, which features a plug-in hybrid powertrain. The Crown Estate/Signia is an all-wheel-drive mid-size crossover available in hybrid and plug-in hybrid powertrains, while the Grand Highlander is a mid-size crossover primarily marketed in North America as a larger variation of the Highlander. The Harrier Venza is a mid-size crossover built on the same platform as the RAV4. Toyota's lineup also includes the Raize, a subcompact crossover developed by Daihatsu and rebadged as the A200 series Daihatsu Rocky. Lastly, there's the RAV4, which has been around since 1994. Given article text here Toyota Hybrid SUVs Toyota offers a variety of compact SUV models globally, including the popular Wildlander and Yaris Cross. The latter is part of the established Yaris platform and has been exported to several regions. Another offering is the Rebadged Daihatsu Terios in Southeast Asia. Third-row seating is a standard feature across several Toyota models marketed in various regions worldwide. The Innova, a mid-size MPV, has been sold exclusively in the Indonesian market since its introduction in 2004. Its second-generation model, introduced in Southeast Asia and India around 2015, also featured rear-wheel-drive design. In Indonesia and India, the third-generation Innova, known as the Kijang Innova Zenix and Innova Hycross respectively, was launched with front-wheel-drive technology. This model offers optional hybrid powertrains. The Noah minivan, developed for Japan's market, is also equipped with standard third-row seating and features an optional hybrid powertrain. In Europe, Toyota offers the ProAce as a passenger van, available in two variants: the Verso and ProAce City. These models come with electric powertrains as an option. The Roomy mini MPV, marketed only in Japan since 2016, is another model that features rear sliding doors but lacks third-row seating. The Rumion compact MPV, primarily sold in Africa, has a three-row seating capacity and was rebadged from the Suzuki Ertiga. In North America and China, the full-size Sienna minivan offers standard hybrid powertrains and third-row seating. Toyota's sports car offerings include the GR86, which is available globally with rear-wheel-drive technology. Another sports model, the Supra, has been jointly developed with BMW and marketed under Gazoo Racing branding since 2019. In Japan, Toyota produces several kei cars, including the COMS microcar and the Copen roadster. The Pixis Epoch is another Japanese-developed kei hatchback that was rebadged from the LA350 series Daihatsu Mira e:S. Toyota's HiAce van has been in production since 1967 and offers a range of configurations, including short-wheelbase, long-wheelbase, and blind van options. The model is mainly marketed in Asia-Pacific and Africa under various nameplates such as Commuter, RegiusAce, KDH, Quantum, and Ventury. The H300 series HiAce was introduced globally in 2019, replacing the previous H200 series with a front bonnet design. This model is available in several markets worldwide, excluding Japan, Europe, and North America. The GranAce and Granvia are upscale passenger-oriented versions of the short-wheelbase H300 series HiAce, marketed throughout Asia-Pacific. Toyota 1000 1969 1981 also sold as the Publica in Japan Toyota 1900 1960 1964 Toyota 2000 1973 1979 UK market version of the T100 Corona Toyota 2000GT 1967 1970 Toyota AA 1936 1943 Toyota AB 1936 1943 Toyota AC 1943 1947 Toyota AE 1941 1943 Toyota Allex 2001 2006 hatchback version of Corolla E120, successor of Sprinter Cielo Toyota Altezza 1998 2005 also sold as the Lexus IS Toyota Altezza Gita 1998 2005 wagon version of Altezza Toyota has manufactured numerous models over the years, some of which were sold under different names. Here are some examples:
\* Models sold as Lexus or Scion: GS (Lexus), xB (Scion in US), xA (Scion in US and Middle East)
\* Sedans: Corolla, Camry, Aurion, Avensis, Yaris
\* Coupes: Camry Coupe, Celica, Mark II Blit
\* Wagons: Carina Surf, Ipsum/Picnic
\* SUVs/4x4s: Land Cruiser 140, Hilux, 4Runner, RAV (not listed)
\* Minivans: Estima/Previa
\* Kei cars: Tercel/Corsa, C+pod
\* Trucks: Hilux Surf, Mark II Qualis, Bandeirante
Some models were discontinued or replaced by other models:
\* Aristo was sold as the Lexus GS from 2005-2011
\* Camry Coupe was discontinued in 1996
\* Celica was discontinued in 2006
\* Corona was discontinued in 2000
\* Cressida was discontinued in 1992
Some models were only sold in specific regions:
\* Toyota BA was only sold in Brazil from 1940-1943
\* Toyota Kijang was only sold in Indonesia from 1977-2004
\* Toyota Mark II Qualis was only sold in Australia and New Zealand
The following are various Toyota models produced over the years, grouped by model name:
\*\*Wagons and Vans\*\*
\* Camry Gracia (wagon)
\* Toyota Mark X ZIO
\* Toyota Massy Dyna (four-ton cab-over truck)
\* Toyota Master
\* Toyota Matrix
\* Toyota Mega Cruiser
\* Toyota MiniAce
\* Toyota Model F (also known as the Van, Tarago, or Space Cruiser in some markets)
\* Toyota MR2
\* Toyota Nadia
\* Toyota Opa
\*\*Small Cars\*\*
\* Toyota Passo (a rebadged Daihatsu Boon)
\* Toyota Pixis Joy (a rebadged Daihatsu Cast)
\* Toyota Pixis Space (a rebadged Daihatsu Move Conte)
\* Toyota Porte/Spade
\* Toyota Premio/Allion
\*\*Hybrid and Electric Vehicles\*\*
\* Toyota Prius c
\* Toyota Prius v/+/α
\*\*Sedans\*\*
\* Toyota Origin
\* Toyota Paseo (also sold as the Cynos in some markets)
\* Toyota Progres
\* Toyota Pronard (also known as the Avalon)
\* Toyota Publica
\*\*Mini Trucks and Commercial Vehicles\*\*
\* Toyota Qualis (sold as the Kijang in India and Nepal)
\* Toyota QuickDelivery
\* Toyota Ractis
\* Toyota Raum
\* Toyota Revo
\* Toyota RH (also known as the Super)
\* Toyota RK
\* Toyota RR (also known as the Master)
\* Toyota SA
\* Toyota SB
\* Toyota SD
\*\*Sports Cars\*\*
\* Toyota Sera
\* Toyota Soarer (also sold as the Lexus SC)
\*\*Rebadged Models\*\*
\* Toyota Space Cruiser (UK version of the Van/Tarago/Model F)
\* Toyota Sparky (a rebadged Daihatsu Atrai 7)
\* Toyota Sprinter Carib (sister car of Corolla wagon)
\* Toyota Sprinter Cielo (sister car of Corolla liftback)
\* Toyota Sprinter Marino (sister product of Corolla Levin)
\* Toyota Stallion (African built version of the Kijang)
\*\*Military Vehicles\*\*
\* Toyota Su-Ki
\* Toyota Type 73
\*\*Other Models\*\*
\* Toyota T100 (North American market)
\* Toyota Tamaraw (Philippines built version of the Kijang)
\* Toyota Tank (2016-2020 model)
\* Toyota Tarago (1983-2019 model)
\* Toyota Tercel (1978-1999 model)
\* Toyota Urban Cruiser (2020-2022 model, rebadged Suzuki Vitara Brezza)
Toyota Concept Vehicles
#### Main Article: Toyota Concept Vehicles
Partial List of Concept Cars Developed by Toyota:
- Toyota iX (2007)
- Toyota 28 (2016)
- 28-foot fiberglass boat in partnership with Yanmar, later entered mass production as the Ponam-28V
- Toyota 4500GT (1989)
- Entered mass production as the Lexus SC400
- Toyota 86 Shooting Brake (2016)
- Sports wagon version of the 86 model
- Toyota 86 Tomica Concept (2015)
- Toyota 86 Patrol Car (2008)
- Replication of a Tomica 86 model
- Toyota A-BAT (2008)
- Toyota A1 (1935)
- Entered mass production as the AA
- Toyota Airport Limousine (1961, 1977)
- Concept vehicles based on the Crown
- Toyota Alessandro Volta (2004)
- Toyota APM (2020)
- Specially created for the 2020 Olympics
- Toyota ASV (1995)
- Retrospectively named ASV-1
- Toyota ASV-2 (2000)
- Toyota ASV-3 (2002)
- Toyota Aurion Sports Concept (2006)
- Toyota Avalon (concept) (1991)
- Toyota AXV (1985)
- Toyota AXV-II (1987)
- Toyota AXV-III (1991)
- Toyota AXV-IV (1991)
- Toyota AXV-V (1993)
- Toyota Aygo Crazy (2008)
- Toyota bZ FlexSpace (2023)
- Toyota bZ Sport Crossover (2023)
- Toyota CAL-1 (1977)
- Toyota Camatte (2012)
- Customizable body panels for teaching children about cars
- Toyota Camatte57s (2013, 2014)
- Different versions of a cycle wheel roadster body
- Toyota Camatte Hajime (2015)
- Toyota Camatte Petta (2017)
- Toyota Camatte Sora (2012)
- Toyota Camatte Setsuna (2016)
- Toyota Camatte Takumi (2012)
- Toyota Camp Mate (1989)
- Expanding campervan based on the TownAce
- Toyota Camry CNG Hybrid (2008)
- Toyota Camry TS-01 (2005)
- Toyota ccX (2002)
- Toyota Celica Cruising Deck (1999)
- Toyota Celica Ultimate Concept (2000)
- Toyota Celica XYR (1999)
- Toyota Century GT45 (1971)
- Toyota C-HR concept (2014)
- Entered mass production as the C-HR
- Toyota Commuter (1970)
- Toyota Concept-i (2017, 2018)
- City car optimised for drivers with wheelchairs
- Toyota Concept-i Ride (2017)
- Toyota Corona 1500S Convertible (1963)
- Toyota Corona 1900S Sporty Sedan (1963)
- Toyota Corona Sports Coupe (1963)
- Toyota Corolla Furia (2013)
Toyota has developed and showcased numerous concept cars over the years, showcasing their innovations in electric vehicles, hybrid powertrains, and alternative fuels. Some notable concepts include:
\* The FCX-80 (1979) and C+pod (2019), both based on the Toyota Ultra-Compact BEV
\* The D4D Clean Power Concept Car (2004), demonstrating a new diesel engine technology
\* The e-Palette (2018), an automated battery-electric minibus
\* The E-Racer (2019), a race car simulator
\* The Electronics Car (1970) and Experimental Aluminum Car (1977), showcasing early electric vehicle concepts
The list also includes fuel cell vehicles, such as the FCEV (1997) and FCV-R (2011), which entered production as the Toyota Mirai. Other notable concepts include:
\* The Fine-Comfort Ride (2017) and Fine-N/S/T (2003/2005/2005), showcasing luxury and comfort features
\* The FT-1 (2014), which inspired the Toyota Supra
\* The FT-3e (2023), a 5-door SUV
\* The FT-AC (2017), a hybrid off-roader
\* The Fun-vii (2011) and Furia (2013), showcasing sporty designs
\* The GR HV (2017) and GR Super Sport Concept (2018), highlighting high-performance capabilities
This list is not exhaustive, but it gives an idea of the various concept cars Toyota has developed over the years. Toyota's Conceptual Creations: A Journey Through Time and Innovation
From the rugged Hilux Bruiser to the futuristic i-foot robot, Toyota has consistently pushed boundaries in conceptual design. The list begins with the Racing Concept (2018), precursor to the iconic Supra, and journeys through the years, incorporating numerous concepts based on various models like MR2, GTV, Camry Hybrid, and more. Highlights include the Toyota Hilux RM-4D (1979), Toyota HV-M4 (1999), and Toyota Hybrid Electric Bus (1995). Other notable mentions include the i-foot (2004) A 2-footed robot, the Insect (2011) 1-seater concept inspired by insect flight, the IMV (2023) also known as the Next Generation Tamaraw Concept and Rangga Concept. The list also features Toyota's more unique creations like the PieAce (2019), a convertible HiAce with an integrated pie oven, the result of an April Fools' Day joke press release. Other notable concepts include the Land Cruiser Speed Cruiser (2016), which boasts a 355 km/h top speed and the futuristic-looking LQ Concept (2019). From motorized wheelchairs to electric open-top race cars, Toyota's conceptual creations showcase its innovative spirit and commitment to pushing the boundaries of what is possible.
Toyota Lineup
Toyota has a wide variety of vehicles in its lineup. The first generation Hilux was the Toyota Next Generation Tamaraw Concept but entered production as the Toyota Hilux Champ. Then came the RAV-Four, entered in 1989 and later the RAV4 Adventure in 2013 focusing on 4WD ruggedness. There's also the RAV4 Premium that highlights luxury. Toyota has also been involved with its retro designs starting from 1999 when they introduced the Toyota Retro Cruiser. They then modified their FJ40 body to fit a UZJ100 chassis for the Toyota Rhombus in 2019. The company has worked on several models since then such as the RiN, RSC, and the Tercel 4WD among others. Based on the Hilux, they introduced the FJ Cruiser and its RV-1 and RV-2 counterpart starting from 1971. Then came the Toyota RV-3 based on HiLux which entered production in 1980. The RV-5 was also part of their line-up entering production as the AL20 Tercel 4WD. In addition, there are models like S-FR and S-FR Racing Concept that debuted in 2015 and 2016 respectively. Toyota also released the Soarer Aero Cabin with an open top in 1987. Their Solara Concept entered production as the Camry Solara in 1998. The company has also experimented with designs such as the Sonic Emotion C-HR Concept in 2018. Based on their C-HR, they made the Space mobility concept car for 2023. Then came the Sportivo Coupe in 2004 and the Sports line which includes the Sports 800 that ran on gas turbine hybrid from 1957. In 1961, Toyota released the Sports X. Later, in 2010, their Sports 800 was converted to a single electric motor. The following year saw the release of Sports EV Twin with twin electric motors. Toyota also made its mark with the SC, SU-HV1, Super AWD, and Supra 4x4 among others. They have continued to innovate with more concepts such as the Tac0m Back To The Future Concept, Tacoma X-Runner, TE-Spyder 800, TES-ERA EV, Town Spider System, Tj Cruiser, and U2. Based on the FJ Cruiser, they introduced the T Sports and Urban Utility vehicle. They also made the Urban Cruiser Concept and UUV for business use in 2019. Then came the Vellfire Spacious Lounge Concept based on their Vellfire. Toyota transmissions, factories, and model codes are listed. Notably, the company revealed a limited edition HiAce "PieAce" convertible for Australia on April Fool's Day in 2019. The press release was issued by Toyota Australia on April 1st, 2019. Additionally, the article mentions Wikimedia Commons having media related to Toyota vehicles and provides links to Toyota concept cars, prototypes, and owners clubs. Note: I applied a rewriting method with a 40% probability of introducing occasional and rare spelling mistakes (SE). The text maintains its original meaning and is easy to understand.

Toyota car models list and price. Toyota car models list 1980s. Toyota car models list 2023. Toyota car models list pdf. Toyota car models list philippines. Toyota car models list with pictures. Toyota car models list pdf free download. Toyota car models list in malaysia. Toyota car models list japan. Toyota car models list uk. Toyota car models list pdf in india. Toyota car models list 2024. Toyota car models list 2010. Toyota car models list in sri lanka. Toyota car models list by year.