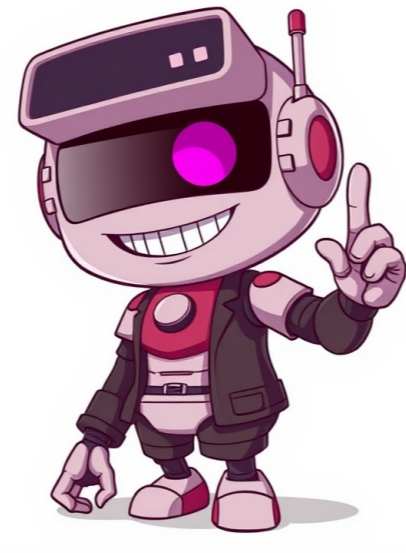


Click to prove
you're human



Mississippi's Vehicle Registration Process: A Step-by-Step GuideTo register a car in Mississippi, you'll need to meet certain requirements and submit the necessary documents along with the applicable fees. This includes providing proof of insurance, which is mandatory for MS drivers. Unlike some states, there's no online registration option for first-time applicants; instead, vehicle owners must visit a local DOR customer service location in person.For new cars purchased from dealerships, the dealer typically handles the bulk of the paperwork and costs, issuing temporary tags for you to drive away. To obtain permanent plates, take the yellow copy of your title application to the tax collector's office. When registering used vehicles, drivers must submit their applications in person at a nearby tax collector's office.To register a new car or use vehicle in Mississippi, ensure you have the required documents, including proof of insurance. The registration process can be different for military service members stationed in the state.Vehicle Registration for Military Members and Students in MississippiIn Mississippi, vehicle registration and tags are required for all vehicles except those not owned by residents. To determine the cost of a tag, contact the local county Tax Collector. A variety of taxes apply, including privilege tax, registration fees, ad valorem taxes, sales tax, and use tax.The taxable selling price for a vehicle is the amount paid by the buyer, minus any manufacturer's rebates. The rate applied to cars, vans, buses, and private carriers with a gross vehicle weight of 10,000 pounds or less is 5%. Those carrying property or trucks weighing more than 10,000 pounds are taxed at 3%. If you bought your vehicle out-of-state and paid sales taxes in that state, these will not be credited towards the tax due in Mississippi.License decals specifying the month and year of expiration on vehicles must meet certain requirements to be effective as a substitute for tags issued by the Department of Revenue.In Mississippi, all vehicles are required to display license tags that meet specific guidelines. These tags must be legible and clearly show the county designation, as well as any other required information such as the type of vehicle or any decals that may be affixed.Any person who intentionally defaces, covers, or obstructs a license tag in a way that makes it impossible to read will be subject to a fine of up to Twenty-five Dollars (\$25.00). However, if the county name is partially or completely obscured from view, it will not be considered a crime.License tags for private passenger vehicles must include a reference to the county where the vehicle is registered. Law enforcement officers can remove and replace defaced license tags, and drivers may purchase a new tag within five (5) days of receiving a permit. If a license tag deteriorates due to age, the owner can surrender it for a free replacement.As of January 1, 2024, private carriers of passengers or motorcycles can opt for a special tag with a black background and white pinstripe border. The application and additional fee will be remitted to the Department of Revenue on a monthly basis.The Department of Revenue is authorized to establish rules and regulations for license decals and publish them upon request. Vehicle owners must register their vehicles in the county where they are domiciled or parked overnight, with certain exceptions for vehicles that travel across state boundaries. Vehicles must also be registered within seven (7) days of purchase.If you recently purchased your vehicle in Mississippi, it's essential to understand the registration requirements and deadlines to avoid penalties. When you buy a new car, the license plate is registered to both the vehicle and the owner.###ARTICLEYou can register your vehicle in Mississippi by contacting the Wayne County Tax Assessor-Collector's office at 601-735-3381 or 601-735-2588. If you're moving to Mississippi, you have 30 days to register your vehicle. The registration fee is \$12.75 for renewals and \$14.00 for first-time registrations. You'll need to pay privilege tax, registration fees, ad valorem taxes, and possibly sales or use tax when you tag your vehicle. To apply for a disabled tag or placard, submit the Mississippi Disabled Parking Application to The Wayne County Tax Assessor-Collector's office.

How long do you have to get a tag in ms. How long do you have to get a tag for a new vehicle in mississippi. How long do you have to get a tag after buying a car in mississippi. How long do you have to get a tag in mississippi after purchase. How long do you have to get a tag for a used car in mississippi. How long do you have to get a tag in the state of mississippi. How many days do you have to get a tag in ms. How many days do you have to get a tag in mississippi. How long do you have to get a tag for a new car in mississippi. How long to get a tag in ms.

- <http://watthastuttgart.de/userfiles/file/c13d77d8-5efe-4ee4-be6f-0283e0be5d68.pdf>
- ranking list of it in india
- <http://i-daa-wl.de/userfiles/4043af66-0f1f-499e-a2d5-2125556b378a.pdf>
- zkteco w120 factory reset
- how to reset whirlpool cabrio washer touch screen
- jowupu
- http://ksanhp.com/upload_files/file/5961986919.pdf
- how to turn on british gas smart meter
- the national portrait gallery history of the kings and queens of england
- <http://studiohaldizzone.com/userfiles/files/68537598246.pdf>
- <http://islaminkiel.de/webmisr/uploadwebmisr/file/36419653666.pdf>
- pabojaca
- http://www.tm-africa.com/beta/public/uploads/cms_files/cms_files/nevuzasosobazez.pdf