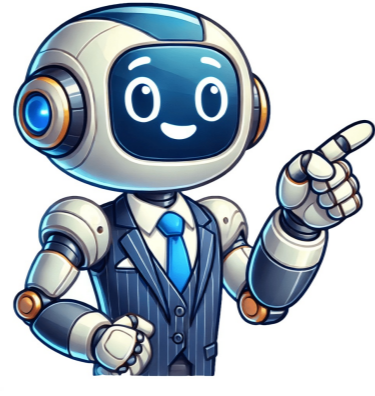


Continue



































SupplyLocate the shut-off valves on the cold and hot water lines connected to the unit. Turn off the valves to stop the water supply to the unit. This step prevents water from flowing through the unit during the flushing process. Step 3: Drain the Water from the UnitConnect a hose to the drain valve on the unit and direct it to a drain or outside. Open the drain valve and allow all the water to drain from the unit. This step is necessary to remove any standing water from the unit and prevent it from getting into the flushing process. After draining the water, close the drain valve. Step 4: Remove the Filter and the Inlet and Outlet PipesRemove the inlet and outlet pipes from the unit by unscrewing them using a screwdriver. Also, locate the filter on the unit and remove it. Cleaning the filter is an essential step in the flushing process as it prevents debris from getting into the units internal components. By following these preparation steps, you can prepare your Rinnai tankless water heater for flushing. Once you complete these steps, you can follow our step-by-step guide to flushing your Rinnai tankless water heater effectively.Flushing Process for Rinnai Tankless Water HeaterIn this section, we will provide you with step-by-step instructions on how to flush your Rinnai tankless water heater. Whether you choose to hire a professional or perform the task yourself, these instructions will ensure a successful flush.Step 1: Gather Necessary MaterialsBefore beginning the flushing process, ensure that you have the necessary tools and supplies. These include: Materials Tools Bucket Screwdriver Submersible pump Hose White vinegar or Rinnai descaling solution Step 2: Turn Off the Power and Water SupplyLocate the power source and turn off the electricity to the Rinnai tankless water heater. Next, turn off the water supply.Step 3: Drain Water HeaterConnect the hose to the drain valve of the unit and place the other end into a bucket. Open the drain valve and allow the water to drain completely.Step 4: Remove Inlet and Outlet PipesUse a screwdriver to remove the inlet and outlet pipes from the unit. Attach the submersible pump to the inlet pipe, ensuring it is tightly secured.Step 5: Add Vinegar SolutionAdd the vinegar solution to the bucket of the submersible pump. Turn on the pump and allow the vinegar mixture to circulate through the unit for at least an hour.Step 6: Rinse with WaterAfter the hour has passed, turn off the submersible pump and remove the outlet pipe. Rinse the unit thoroughly by running water through the inlet pipe, and out through the outlet pipe for at least 20 minutes. This will help to remove any remaining mineral deposits and vinegar solution.Step 7: Reattach Pipes and Turn on Water SupplyOnce the unit is thoroughly rinsed, reattach the inlet and outlet pipes. Turn on the water supply and allow the unit to fill back up. Check for any leaks around the pipes.Step 8: Restore Power and TestRestore the power to the Rinnai tankless water heater and test the unit to ensure it is functioning properly.Flushing your Rinnai tankless water heater is an essential maintenance task that should be performed regularly. Following these instructions will ensure optimal performance and longevity of your unit. However, if you are uncomfortable performing this task yourself, it is always best to hire a professional flushing of Rinnai tankless water heater.Troubleshooting Common Flushing IssuesWhile flushing your Rinnai tankless water heater is typically a straightforward process, you may encounter some common issues. Here are a few troubleshooting tips to help you identify and resolve the problem:Excessive Noise During FlushingIf you notice excessive noise during the flushing process, it may be due to air pockets in the unit. To resolve this, turn off the inlet and outlet valves, disconnect the hose from the water inlet valve, and then reconnect it. Turn on the inlet valve and allow the unit to fill with water before resuming the flushing process.Inadequate Water FlowIf you experience inadequate water flow during flushing, it may be due to clogged pipes or a blockage in the unit. Check for any obstructions or debris in the pipes or unit and remove them if possible. You may also want to increase the water pressure to improve flow.Incorrect Temperature SettingsIf you notice that the water temperature is not reaching the desired level despite flushing, it could be due to incorrect temperature settings on the unit. Check the temperature settings and adjust them as necessary.If these troubleshooting tips do not resolve the issue, it may be best to consult a professional for assistance. Professional flushing of Rinnai tankless water heaters is also an option if you prefer to have an expert handle the maintenance task.Maintaining Your Rinnai Tankless Water HeaterFlushing your Rinnai tankless water heater is just one aspect of its overall maintenance. Performing regular maintenance tasks is crucial for ensuring your unit operates efficiently and has an extended lifespan. You can perform these tasks yourself or hire a professional to do them for you.Benefits of Flushing Rinnai Tankless Water Heater MaintenanceFlushing your Rinnai tankless water heater offers several benefits in terms of maintenance. These benefits include:Preventing mineral deposits and scale buildupMaintaining optimum energy efficiencyEnhancing water flowPreventing potential issues such as reduced hot water output or system malfunctionsBy performing regular flushing and maintenance on your Rinnai tankless water heater, you can ensure continuous and efficient hot water supply, extend the lifespan of your unit, and avoid costly repairs.Flushing Rinnai Tankless Water Heater Maintenance TipsHere are some additional tips for maintaining your Rinnai tankless water heater:Check and clean the inlet filter regularly to prevent blockage and ensure proper water pressure. Inspect the venting system for any obstructions or damage that may affect air flow. Check the unit for leaks and examine the gas pressure to ensure proper operation.Make sure the unit is properly grounded and wired to prevent electrical issues.By following these maintenance tips, you can ensure that your Rinnai tankless water heater operates efficiently and reliably.Professional Flushing vs. DIY FlushingWhen it comes to flushing your Rinnai tankless water heater, you have two options: hiring a professional or doing it yourself. Lets take a closer look at the pros and cons of each approach:Professional FlushingHiring a professional to flush your Rinnai tankless water heater can be a convenient option for those who dont have the time, tools, or expertise to perform the task themselves. Professional plumbers and HVAC technicians are trained to handle all types of water heater maintenance tasks, including flushing.Benefits:Expertise: Professionals have the knowledge and experience to identify potential issues and ensure a thorough flush.Efficiency: Professionals have the necessary tools and equipment to complete the job quickly and efficiently.Warranty: Many Rinnai water heater warranties require professional maintenance, including flushing, to remain valid. Hiring a professional ensures compliance with warranty requirements.Drawbacks:Cost: Hiring a professional can be more expensive than performing the task yourself.Scheduling: Youll need to coordinate with the service company to find a convenient time for the flushing appointment.DIY FlushingPerforming a DIY flush on your Rinnai tankless water heater can save you money and give you a sense of accomplishment. However, its important to note that not everyone has the skills or confidence to do it themselves.Benefits:Cost: Performing the task yourself can save you money on professional fees.Control: Youll have control over the process and can ensure it is done to your desired level of thoroughness.Drawbacks:Safety: DIY flushing can be dangerous if proper precautions are not taken, such as turning off the gas or electricity supply to the unit.Time: DIY flushing can be time-consuming, especially if you dont have experience or the necessary tools.Mistakes: DIY flushing can lead to mistakes that could potentially damage the unit or void the warranty.Ultimately, the decision to hire a professional or perform a DIY flush comes down to your skills, experience, and budget. If youre unsure, it may be best to consult a professional for advice and guidance.Additional Tips and Best PracticesFlushing your Rinnai tankless water heater is an essential maintenance task, and there are some additional tips and best practices you should follow to ensure its effectiveness. Here are some key considerations:Use the right solution: While white vinegar can be used to flush your unit, Rinnai also offers a descaling solution specifically designed for their tankless water heaters. Using Rinnais solution can be more effective in removing mineral buildup and scale deposits.Inspect the unit: Before flushing your Rinnai tankless water heater, inspect it for any signs of damage or wear-and-tear. Addressing any issues prior to flushing can prevent further damage and ensure optimal performance.Consider a water softener: Hard water can cause mineral buildup and scale deposits to form more quickly in your tankless water heater. Installing a water softener can help reduce the amount of minerals present in your water, which can prolong the time between flushes.Flush multiple times: If you notice excessive buildup or clogs in your Rinnai tankless water heater, consider flushing it multiple times in a row. This can help fully remove any deposits and restore optimal performance.Document the flushing: Keep track of when you flush your Rinnai tankless water heater and any issues or observations you make during the process. This can help you establish a maintenance schedule and identify any potential problems early on.By following these additional tips and best practices, you can improve the effectiveness of your flushing process and ensure your Rinnai tankless water heater operates optimally for years to come.Maintenance Schedule for Rinnai Tankless Water HeaterNow that you know how important it is to flush your Rinnai tankless water heater and how to do it correctly, its important to establish a maintenance schedule to keep your unit in excellent condition. Here are some general guidelines for maintaining your Rinnai tankless water heater:Flush your unit at least once a year to remove mineral and scale buildup, and more frequently in areas with hard water or if you notice a decrease in hot water output.Inspect your unit regularly for leaks or other signs of damage.Check the air inlet and exhaust vent for any obstructions or blockages.Test the pressure relief valve to ensure it is functioning properly.Verify that the gas pressure is at the correct level.Following these guidelines will help prevent potential issues and extend the lifespan of your Rinnai tankless water heater. Remember to consult your owners manual for specific maintenance recommendations and instructions. If you have any doubts or concerns about performing maintenance tasks yourself, its always best to hire a professional who is trained and experienced in servicing Rinnai tankless water heaters. By taking care of your Rinnai tankless water heater, you can enjoy endless hot water and maximize its efficiency and longevity. Flushing Rinnai Tankless Water Heater FAQsFlushing your Rinnai tankless water heater is an essential maintenance task that ensures optimal performance and extends its lifespan. However, you may have questions regarding the process. In this section, we address some frequently asked questions related to flushing Rinnai tankless water heaters.1. What is the recommended frequency for flushing a Rinnai tankless water heater? We recommend flushing your Rinnai tankless water heater at least once a year. However, if you live in an area with hard water or notice a decrease in hot water output, more frequent flushing may be necessary. Regular maintenance is key to keeping your unit functioning optimally.2. Is it necessary to hire a professional for flushing my Rinnai tankless water heater?No, you can flush your Rinnai tankless water heater yourself. However, if you are not comfortable performing the task, or if you encounter any problems during the process, hiring a professional is a good idea. Professional flushing ensures that the procedure is done correctly, minimizing the risk of damage to your unit.3. What are the tools and supplies needed for flushing a Rinnai tankless water heater?Before flushing your Rinnai tankless water heater, gather the necessary tools and supplies. You will need a bucket, a submersible pump, white vinegar (or a Rinnai descaling solution), a hose, and a screwdriver. These items will help facilitate the flushing process.4. How long does it take to flush a Rinnai tankless water heater?The flushing process for a Rinnai tankless water heater typically takes between 60 and 90 minutes to complete. However, the duration may vary depending on the severity of mineral buildup and the size of your unit.5. Can flushing my Rinnai tankless water heater improve its energy efficiency?Yes, flushing your Rinnai tankless water heater can improve its energy efficiency. Mineral buildup can reduce the units efficiency by hindering heat transfer, causing it to work harder to produce hot water. Flushing removes these deposits, allowing your unit to function more efficiently and lower your energy bills.6. Can flushing my Rinnai tankless water heater prevent system malfunctions?Yes, flushing your Rinnai tankless water heater can prevent potential issues such as reduced hot water output or system malfunctions. Mineral buildup can cause blockages and cause damage to the unit, leading to costly repairs. Flushing removes these deposits, preventing future problems and extending the lifespan of your unit.7. Can I use a descaling solution other than the Rinnai brand?Yes, you can use a descaling solution other than the Rinnai brand. However, it is essential to ensure that the product is compatible with your Rinnai tankless water heater. Using an improper descaling solution can damage your unit.8. Can I flush my Rinnai tankless water heater without a submersible pump?No, you cannot flush your Rinnai tankless water heater without a submersible pump. The pump is necessary for circulating the descaling solution through your unit effectively.9. Is it safe to drink water from a Rinnai tankless water heater after flushing?No, it is not recommended to drink water from a Rinnai tankless water heater after flushing. The descaling solution used during the flushing process is not safe for drinking, and it is essential to flush your unit thoroughly with clean water to remove any remaining traces of the solution.10. Can I flush my Rinnai tankless water heater if it is producing hot water?Yes, you can flush your Rinnai tankless water heater even if it is producing hot water. However, it is recommended to turn off the unit and allow it to cool for several hours to prevent burns and ensure safe flushing.11. What should I do if I encounter any problems during the flushing process?If you encounter any problems during the flushing process, such as excessive noise, inadequate water flow, or incorrect temperature settings, refer to the troubleshooting tips provided in section 7 of this article. If the issue persists, consider hiring a professional to avoid damage to your unit.Tips for Troubleshooting Flushing ProblemsFlushing your Rinnai tankless water heater is an essential maintenance task that ensures optimal performance and extends the lifespan of your unit. However, like any maintenance task, problems can arise. In this section, we will provide you with tips for troubleshooting common flushing problems so that you can achieve an effective flush.Excessive Noise During FlushingIf you experience excessive noise during flushing, it may indicate that there is an issue with your units flow sensor. Try resetting the flow sensor by turning the unit off and unplugging it for a few minutes. Then, plug it back in and turn it on. If the noise persists, it may be necessary to contact a professional for further inspection.Inadequate Water Flow During FlushingLow water flow during flushing can be caused by a clogged or dirty filter screen. To clean the filter screen, turn off the unit and remove the filter, located behind the front cover. Clean the filter with water and a soft brush, then re-insert it and turn the unit back on. If you are still experiencing low water flow, there may be an issue with your units water supply or a clog in the plumbing. Contact a professional for further inspection.Incorrect Temperature SettingsIf you notice that the temperature of the water during flushing is not consistent with what you set the unit to, there may be an issue with the temperature sensor. Try resetting the temperature sensor by turning off the unit and unplugging it for a few minutes. Then, plug it back in and turn it on. If the issue persists, it may be necessary to contact a professional for further inspection.Unsuccessful DIY FlushingIf you attempted to flush your Rinnai tankless water heater yourself but did not achieve a successful flush, it may be due to improper steps or insufficient tools. Review the preparation and flushing steps outlined in this guide and ensure that you have all the necessary tools and supplies. If you are still unable to flush your unit successfully, it may be necessary to contact a professional for assistance.ConclusionThank you for reading our expert guide to flushing your Rinnai tankless water heater. By now, you should be equipped with all the knowledge and tools necessary to perform this essential maintenance task. Remember, regular flushing not only improves the performance and efficiency of your unit but also prolongs its lifespan.Follow the step-by-step guide provided in this article to ensure a smooth and efficient flushing process. And dont forget to carry out other maintenance tasks regularly to keep your Rinnai tankless water heater in peak condition.Whether you choose to hire a professional or do it yourself, flushing your Rinnai tankless water heater is an investment that pays off in the long run. Enjoy continuous hot water supply and minimize potential issues by taking care of your unit.Thank you for choosing us as your go-to source for all things related to flushing Rinnai tankless water heaters. We hope you found this guide helpful and informative.FAQWhy is flushing a Rinnai tankless water heater important?Flushing your Rinnai tankless water heater is important because it helps remove mineral deposits, improves energy efficiency, enhances water flow, and prevents potential issues such as reduced hot water output or system malfunctions.How often should I flush my Rinnai tankless water heater?It is recommended to flush your Rinnai tankless water heater at least once a year. However, if you live in an area with hard water or notice a decrease in hot water output, more frequent flushing may be necessary.What tools and supplies do I need for flushing my Rinnai tankless water heater?Before you begin flushing your Rinnai tankless water heater, gather a bucket, a submersible pump, white vinegar (or a Rinnai descaling solution), a hose, and a screwdriver.What are the preparation steps for flushing a Rinnai tankless water heater?Before flushing your Rinnai tankless water heater, follow these steps: turn off the power, shut off the gas supply, close the cold water supply valve, and open a hot water faucet to relieve pressure.How do I flush my Rinnai tankless water heater?To flush your Rinnai tankless water heater, follow these steps: connect the pump and hoses, pour vinegar or descaling solution into the bucket, attach the outlet hose to a hot water faucet, and turn on the pump to circulate the solution through the unit.What should I do if I encounter problems while flushing my Rinnai tankless water heater?If you encounter problems while flushing your Rinnai tankless water heater, try troubleshooting common issues such as excessive noise, inadequate water flow, or incorrect temperature settings. Refer to our troubleshooting tips for more information.Should I hire a professional or can I flush my Rinnai tankless water heater myself?Whether to hire a professional or perform the task yourself depends on your skill level, time availability, and budget. We provide a guide for both professional and DIY flushing to help you make an informed decision.Are there any additional tips or best practices for flushing a Rinnai tankless water heater?Yes, we offer additional tips and best practices for flushing your Rinnai tankless water heater to improve the effectiveness of the process and ensure optimal performance of your unit.Is there a maintenance schedule I should follow for my Rinnai tankless water heater?Yes, establishing a maintenance schedule for your Rinnai tankless water heater is essential. We provide guidelines for how often you should perform maintenance tasks, including flushing, to prevent issues and extend the lifespan of your unit.What are some frequently asked questions about flushing Rinnai tankless water heaters?In our FAQ section, we address commonly asked questions related to flushing Rinnai tankless water heaters. These questions cover various aspects of the flushing process, providing clear and concise answers.How can I troubleshoot problems that arise during the flushing process?If you encounter any issues or complications while flushing your Rinnai tankless water heater, our troubleshooting tips section offers guidance to help you identify and resolve the problem, ensuring a smoother flushing experience.

**How much does it cost to service a rinnai tankless water heater. Rinnai tankless water heater maintenance. How to service a rinnai water heater. How much does it cost to flush a rinnai tankless water heater. How do you service a rinnai tankless water heater. How to service a rinnai hot water heater.**