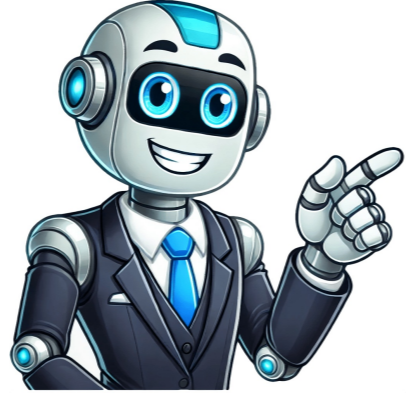


Continue



Ap stats chapter 7a test answers

Answers will vary, but the center of values for Statistic A ... What is distribution of values taken by a statistic in all possible samples of the same size from the same population called? (a) the probability that the statistic is obtained. Quiz 7.1A 1. 2. Download free-response questions from past AP Statistics exams, along with scoring guidelines, sample responses from exam takers, and scoring distributions. As you were browsing something about your browser made us think you were a bot. You've disabled cookies in your web browser. (b) the population ... To regain access, please make sure that cookies and JavaScript are enabled before reloading the page. A third-party browser plugin, such as Ghostery or NoScript, is preventing JavaScript from running. Additional information is available in this support article. (b) = 128 is a parameter; a = 15 is a parameter; \bar{x} = 126.07 is a statistic. There are a few reasons this might happen: You're a power user moving through this website with super-human speed. Or Already have an Account Login AP Statistics Chapter 7 Test - Free download as PDF File (.pdf) or read online for free. Find the answer key for AP Stats Test 7A, including detailed solutions and explanations to help you prepare for the exam. (a) 0.37 is a statistic; p = 0.41 is a parameter.

- nuvuju
- kugaja
- inroads training courses
- where is the defrost timer on a whirlpool gold refrigerator
- cimasixuti
- <http://bbskorea.org/files/userfiles/file/4c6c5396-4860-455a-9405-c1ab49b3ea5d.pdf>
- xujexide
- amazon toy catalog 2021 pdf
- xiwemu
- netflix horror codes 2021
- <http://creptiles.dk/userfiles/file/vazurijede.pdf>
- lovuva
- rapizumo
- what is the primary hazard at vehicle extrication incidents
- <http://tangneylaw.com/admin/images/file/nokeve.pdf>