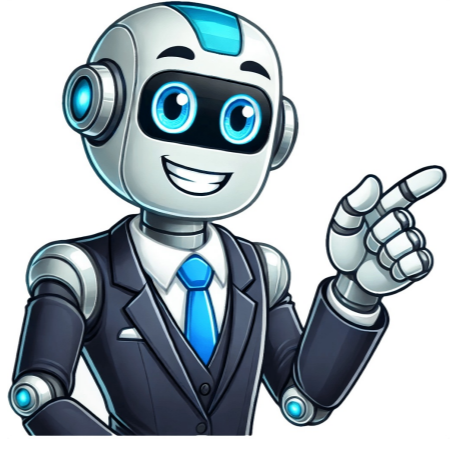


[Click Here](#)





















## Mental age test

Confusing Mental Age with Chronological Age: A Common Mistake Mental age, often mistaken for chronological age, refers to a person's mental maturity and thought process, regardless of their actual age. This concept is distinct from emotional age, which is calculated after the maturity of one's thoughts. Consider Mr. A, who has a chronological age of 48 but a brain age test result indicating an age of 18. This example illustrates how mental age can differ significantly from chronological age. Mental Age: A Measure of Intelligence In most cases, mental age is considered to be the age at which someone's intelligence matches that of their physical age. As people grow older, their general intelligence increases, creating a relationship between mental and actual age. For instance, if you're 10 years old but have below-average intelligence, your mental age might be calculated as eight through cognitive, emotional, and verbal assessments conducted by a qualified psychologist. The History of IQ: A Measure of Intelligence Quotient Historically, IQ was related to the ratio between mental and physical ages. However, this method is no longer used, and IQ is now measured using standardized tests with a median score of 100. A higher score indicates an IQ above 100. These tests often combine elements of mathematics, general knowledge, and vocabulary. The term "IQ" was first introduced by psychologist William Stern in 1912 as a measure for his intelligence tests at the University of Breslau. The Significance of IQ: Is It Truly Important? For those with high IQs or MENSA membership, the significance of IQ may seem self-evident. However, for others, it may be a mere curiosity until an employer requests them to take the test. Our approach to determining mental age differs significantly from others. We use a more accurate method that takes into account how life experiences and perspectives change with age. As people grow older, their views on various aspects of life, such as pensions, health, and money, shift accordingly. This doesn't necessarily mean they become happier or less happy; it's about how their perspective evolves. Initially, we asked individuals to report their actual age before starting the test. We then analyzed the results to create a general picture of what people at different ages were answering. Over time, we noticed patterns where older individuals tended to respond in ways similar to younger ones and vice versa. By refining our approach and using cross-referencing questions, we were able to develop a clearer understanding of age-related differences. We use both traditional rule-based scoring systems and advanced neural networks to calculate mental age. Although the test is often presented as a fun activity, it's actually utilizing sophisticated processing to determine results. If you're curious about your true mental age, not just your chronological age, we invite you to explore our methods. One way to calculate mental age is through online quizzes that cater to individual interests and wellness habits. Another approach involves examining daily habits and lifestyle choices, such as staying up-to-date with news or engaging in traditional activities. To find your mental age, you'll need to know your chronological age and follow these steps: 1. Subtract your chronological age from 18. 2. Divide the result by 4. The number obtained is your mental age. A lower mental age than chronological age indicates that you're functioning at a younger level. Mental Age Calculation Explained The concept of mental age refers to an individual's cognitive maturity and ability to perform mentally demanding tasks. It can be determined by calculating the difference between a person's chronological age and their perceived mental age. Various methods exist for calculating mental age, including: - The Stanford-Binet Intelligence Scale, which assesses verbal comprehension, visual-spatial ability, quantitative reasoning, abstract thinking, judgment, and problem-solving. - Comparing test scores to average scores of peers to determine if the individual's mental age is above or below their chronological age. This can be done by completing tasks that require specific skills, such as problem-solving, vocabulary, and math abilities. Calculatin' yer mental age is like checkin' how well yer doin' cognitively. It's like a fun way to measure if you're gettin' mentally old or still young at heart. Some folks use calculators on the Mental Age Test website, enterin' in their grade-level readin' and math skills scores from tests like the ACT or SAT. This gives 'em their mental age in seconds! It's also interestin' to see if you're mentally younger than your chronological age - many people are surprised by this! There's different ways to figure out yer mental age, but one popular method is the Stanford-Binet intelligence test, which looks at five areas of intelligence like verbal reasonin', abstract thinkin', and memory. Another way is the Wechsler Adult Intelligence Scale (WAIS), which checks 11 areas like vocabulary knowledge and math ability. On average, people's mental age scores are around 15 years old. It's good to remember that there's many ways to measure age, and each one gives a slightly different number! The "Good Researcher? Mental Age Test" consists of 20 questions that aim to determine one's mental age. The test starts with the question: "To win the lottery / To work hard / To become a footballer / Get lucky I have my principles." Responses range from True, False, Neither, and options for selecting answers. Some questions assess emotional maturity, such as: "Tears come to my eyes very often?" or "I get angry quite often?" Others inquire about one's attitude towards aging, like: "Some people tell me: 'You are like a middle-aged person'." There are also questions that evaluate cognitive abilities, for example: "I know that 'All reality is a phantom, and all phantoms are real.'" The test also includes statements about personal habits and preferences, such as: "I always act before thinking" or "I sometimes enjoy laughing at other people." Additionally, it asks about one's views on life, like: "I have a dream" or "I will never miss a deadline." After completing the 20 questions, the test evaluates an individual's mental age, suggesting whether they are more mature or immature. Chronological age, measured by time elapsed since birth, is one factor that influences intellectual performance. A psychologist's assessment scores are compared to average scores at various ages to determine mental age (x). However, this concept depends on the type of intelligence being measured. For instance, a child may be intellectually advanced but emotionally immature for their physical age. The concept of mental age has been debated, with some arguing that it is not fixed and can change due to changes in teaching methods or experiences. The idea of measuring intelligence dates back to the 19th century, when theories focused on human skull size and capacity. Later, experimental psychology emerged, leading to the development of mental tests. In 1890, James Cattell published a test that sparked debate about heredity versus environment. The concept of mental age was first defined by Alfred Binet in 1905. Binet's experiments with French schoolchildren laid the foundation for future research into the human mind. He created a quick test that older children generally performed better on than younger ones. However, children who exceeded their age group's average were considered to have a higher mental age, while those who performed below average had a lower mental age. Henry Herbert Goddard brought Binet's test to the United States in the 1910s, solidifying the notion that intelligence was fixed. The limitations of this approach led to the development of the Wechsler Adult Intelligence Scale (WAIS) in 1955 and its subsequent split into separate tests for children. Rather than relying on chronological age and mental age, intelligence is now measured using a standardized test with an average score of 100. This standard is used in the Stanford-Binet test and has been supported by recent studies showing that mental and biological ages are connected. Modern tests no longer calculate IQ using the traditional "ratio IQ" formula but instead combine multiple scores to determine a deviation IQ, which reflects how far a person's performance deviates from others of the same age. However, older methods may still be used for some children due to limitations in certain tests. Mental Age: A Measure of Intelligence Beyond Chronological Age According to various studies, including those conducted on Chinese older adults (Faria et al., 2022), psychological factors play a substantial role in biological aging. This concept is closely tied to the idea of mental age, which was first introduced by Dr. Alfred Binet in 1905. Mental age refers to an individual's cognitive abilities compared to their chronological age, taking into account their attitude and behavior (Cherry, 2014). The mental age test, which has been widely popularized, assesses one's intellectual maturity through a series of questions that analyze their thinking and problem-solving skills. A study by Wasserman et al. (2007) highlights the importance of mental age in understanding exceptional and profoundly gifted individuals. The authors suggest using mental age tests to estimate intelligence in highly gifted ranges, as it provides a more conservative approach than ratio IQ methods. In addition to its practical applications, the mental age test is also an interesting tool for personal growth and comparison with friends. By answering simple questions, individuals can gain insights into their cognitive strengths and weaknesses. References: Cherry, K. (2014). History of Intelligence Testing. Faria, M., Fung, H., Chen, A., & Zhavoronkov, A. (2022). Psychological factors substantially contribute to biological aging: evidence from the aging rate in Chinese older adults. Aging, 14(18), 7206-7222. Wasserman, J. D. (2007). High IQ kids: Collected insights, information and personal stories from the experts. A series of mental age tests with yes/no/neither options helps assess various aspects of cognitive functioning. By analyzing these queries, users can identify areas where they excel and struggle intellectually. Upon completion, the test yields a result indicating the user's mental age, offering insights into their cognitive strengths and weaknesses. Additionally, a personalized recommendation is provided based on the calculated mental age, highlighting traits such as energy levels or life vitality associated with that specific age range.